



**COLLET
CHUCK**

QD-CRL42 A2-5
quick change direct mount



Key Features

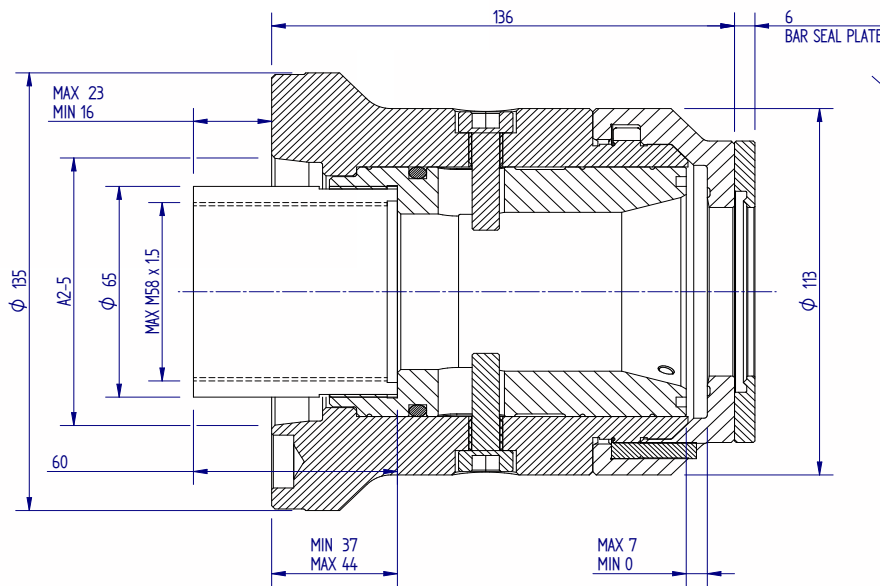
Quick Change Collet Chuck for an A2-5 Spindle nose with 4 - 42mm gripping range and max speed of 7100 rpm.

Max Input Force (kN): 25
 Max Gripping Force (kN): 55
 Weight (kg): 10
 Suitable for M673 Multibore and D173E Spring collets.
 DIN



Collet Chuck

Quick change cap with safety lock, ideally suited for barfeed applications



Dimensions	
Mount	A5
A	113
B	136
C	N/A
D	60
E max	m58 x 1.5
F	65
G max	23
G min	16
H	135

Description and Specifications:

Gripping Range (mm): 4 - 42
 Collet Increment (mm): 2
 Sleeve Stroke (mm): 7
 Max Input Force (kN): 25
 Max Gripping Force (kN): 55
 Matching Cylinder: S1246