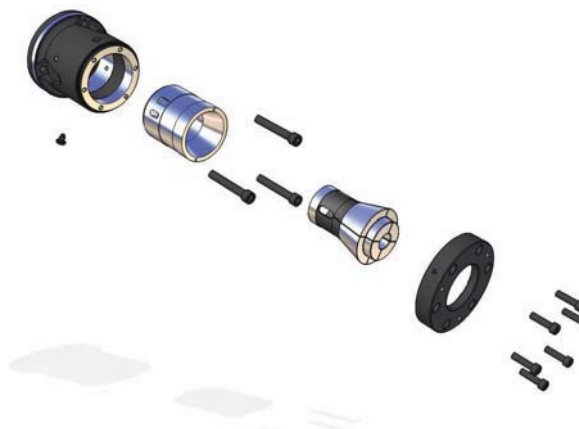
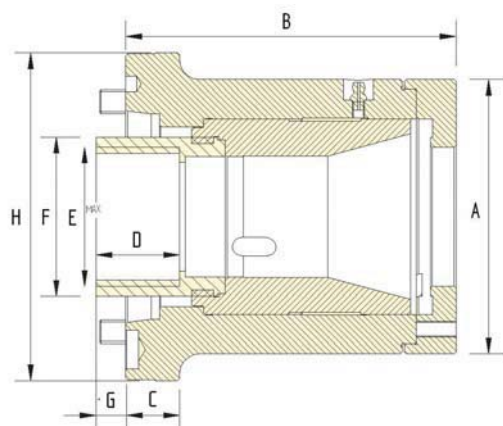


CRL Long Series Power Collet Chucks


- Fixed length for all second operations.
- Compact design – minimum overhang.
- Interchangeable on spindle with Kitagawa series B200 chucks.
- High concentric accuracy
- Supplied complete with blank connector for threading to suit drawtube.
- All parts made of alloy steel hardened and precision ground.



SPECIFICATIONS		CRL42	CRL42A5	CRL42A6	CRL54A6	CRL60	CRL60A6	CRL60A8
Gripping Range	Max mm	42	42	42	54	60	60	60
	Min mm	1.6	1.6	1.6	1.6	1.6	1.6	1.6
Collet Increment	mm	3	3	3	3	3	3	3
Sleeve Stroke	mm	7	7	7	10	7	7	7
Max Input Force	kN	25	25	25	30	30	30	30
Max Gripping Force	kN	55	55	55	60	60	60	60
Max Speed (r.p.m.)	min ⁻¹	7100	7100	7100	6300	6300	6300	6300
Net Weight	kg	10	9.5	10.7	15	15.2	15	18.5
Matching Cylinder		S1246	S1246	S1246	S1552/75	S1552/75	S1552/75	S1552/75
Collet Ref		D-673	D-673	D-673		D-677	D-677	D-677
	Varibore	DIN6343	DIN6343	DIN6343	D-120	DIN6343	DIN6343	DIN6343
	Spring	173E 4728	173E 4728	173E 4728	D-853	D185 4291	D185 4291	D185 4291

DIMENSIONS	CRL42	CRL42A5	CRL42A6	CRL54A6	CRL60	CRL60A6	CRL60A8
Mount	140 x 5	A2-5	A2-6	A2-6	170 x 5	A2-6	A2-8
A	110	110	110	138	138	138	138
B	133	143	145	160	148	160	156
C	20	20	33	27	24	27	36
D	30	30	30	25	30	30	30
E	M55 x 1.5	M55 x 1.5	M55 x 1.5	M70 x 1.5	M70 x 1.5	M70 x 1.5	M70 x 1.5
F	62	62	62	80	80	80	80
G Max	11	1	-1	-2	10	-2	2
G Min	4	-6	-8	-9	3	-9	-5
H	160	135	165	165	190	165	210